

USB Connection

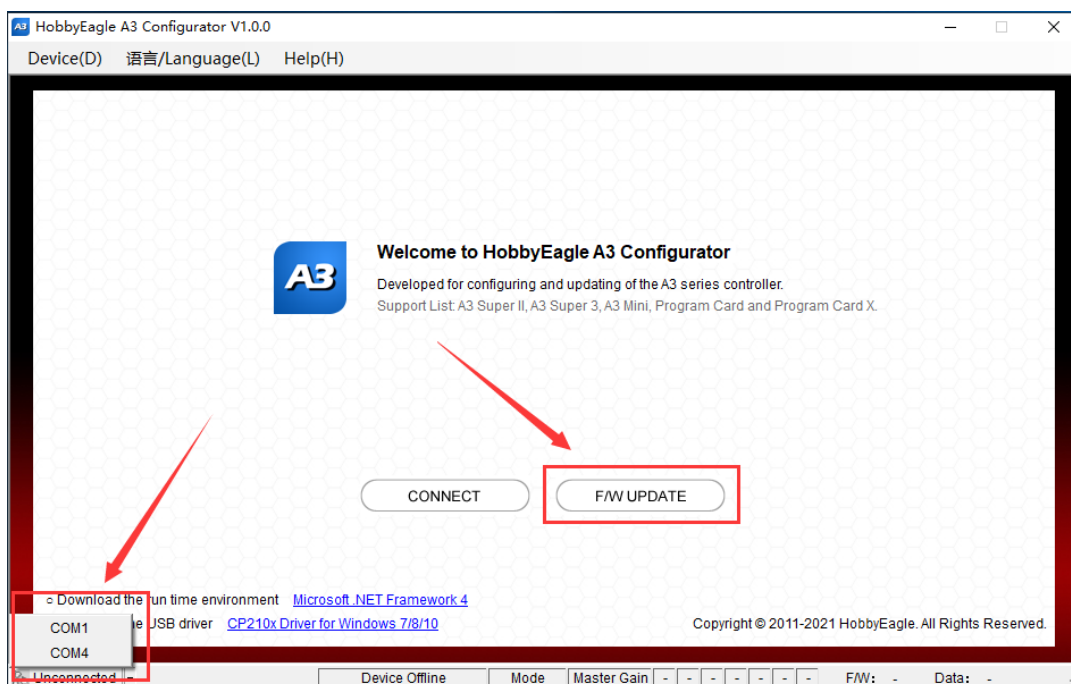
- ⚠️ ● Use only the USB adapter and the black data cable included with our product to connect the gyro to the PC or the programming card. The cable is special-made and different from those common USB data products available in the market.
- If you are going to upgrade the program card (X), DO NOT connect it to the cable yet.

Connect the data cable to the USB adapter and the DATA port of the gyro with the other end (The figure below is only an example for A3 Super 3). Plug the adapter into the USB port of the PC. The gyro will power up and start initialization.




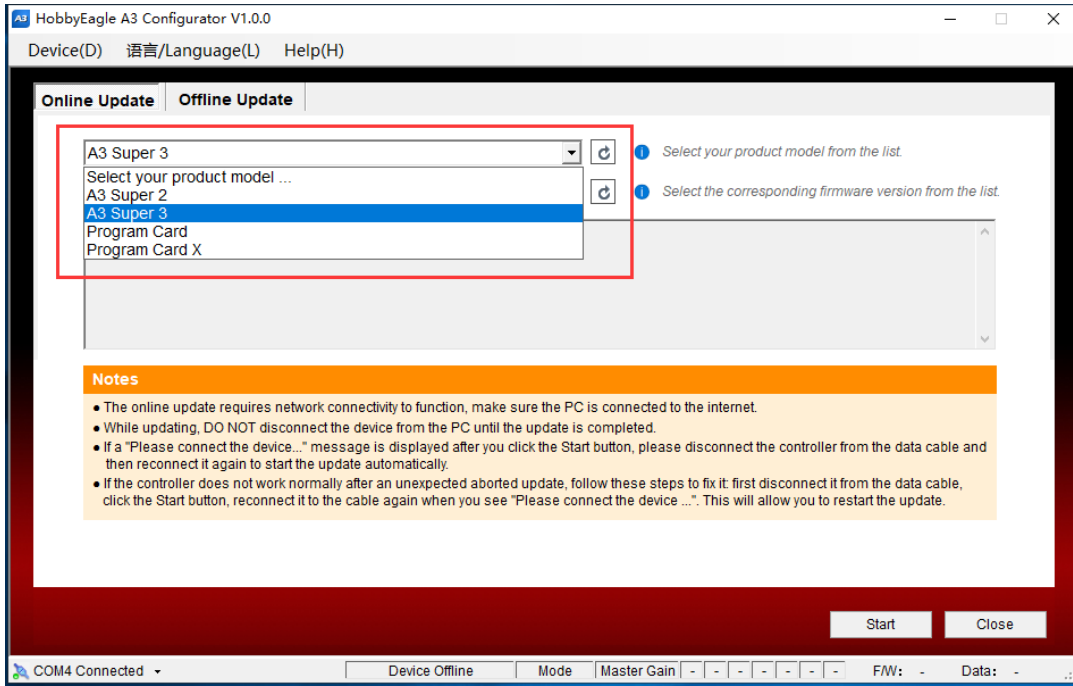
Running the Firmware Update Wizard


Run the HobbyEagle A3 Configurator, choose the port number from the list on the bottom-left corner, then click *FW UPDATE* button or choose *Firmware Update* from the *Device* menu.

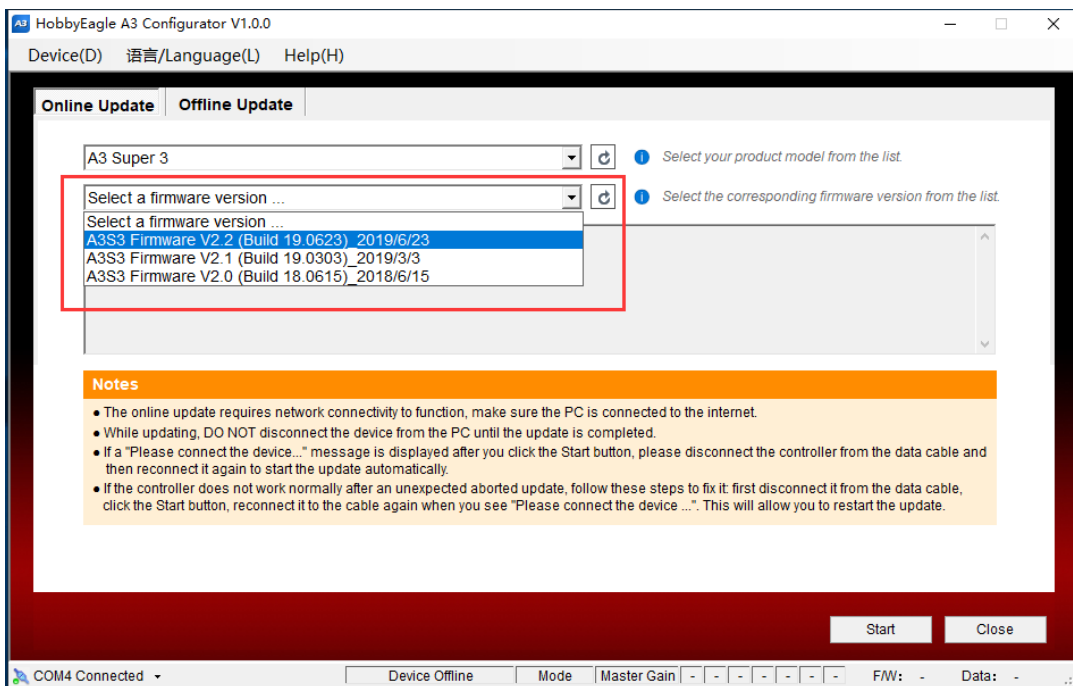


Online Update (Recommended)

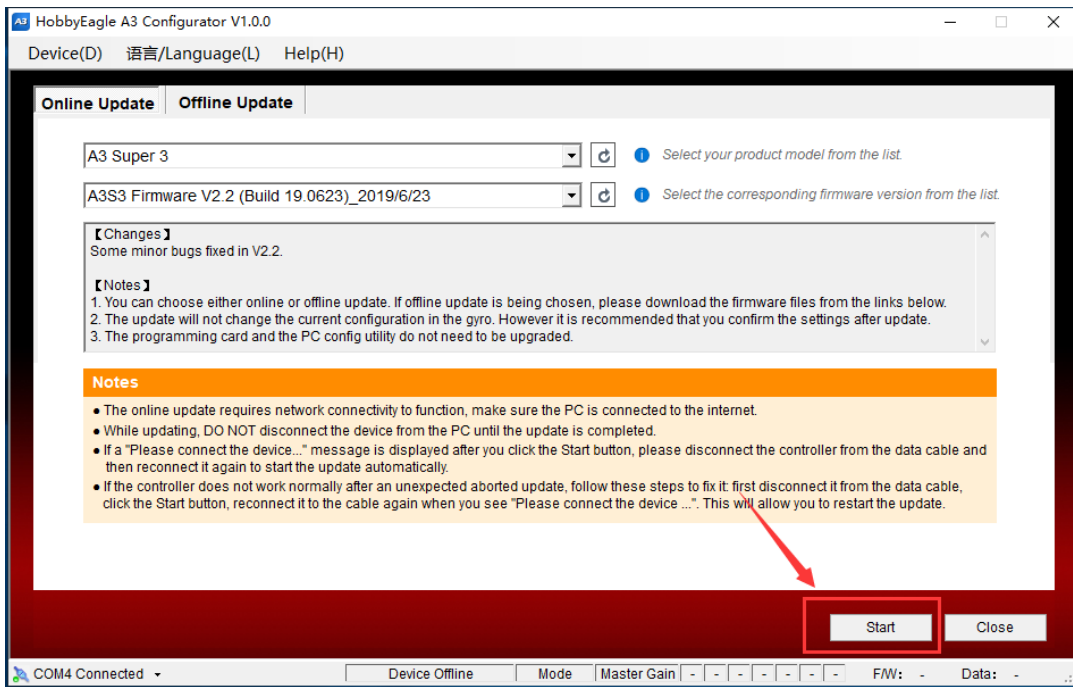
The online update requires network connectivity to function, the program will get the latest firmware list from the server. First choose your product model from the list, click  to reload the list.



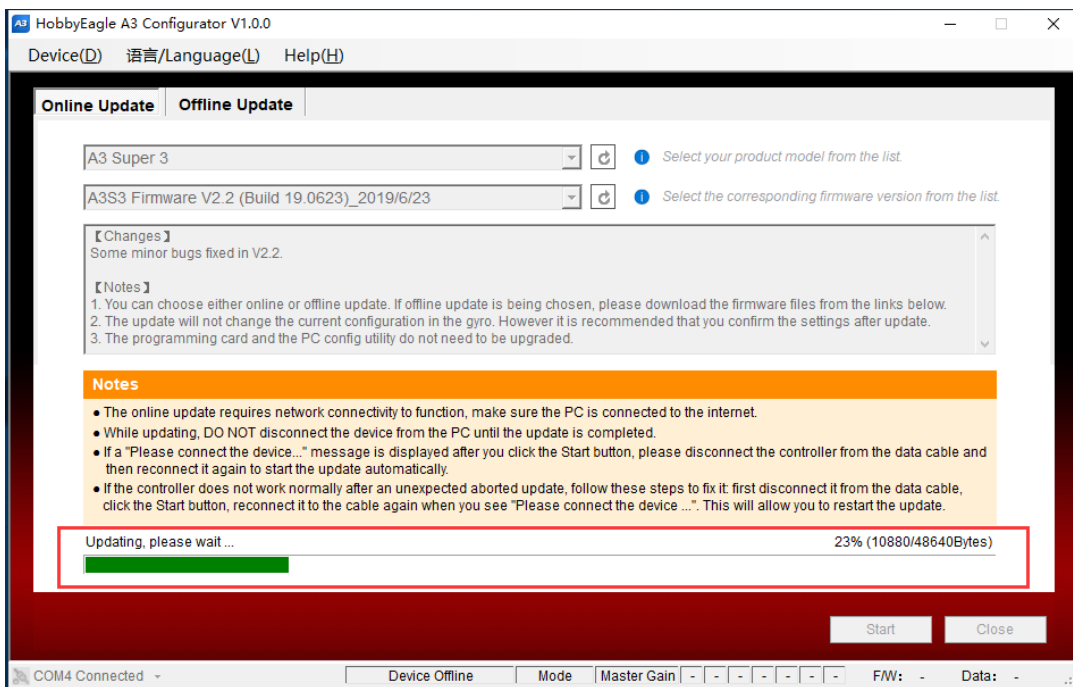
Then choose a firmware version from the following list, click  to reload the list.



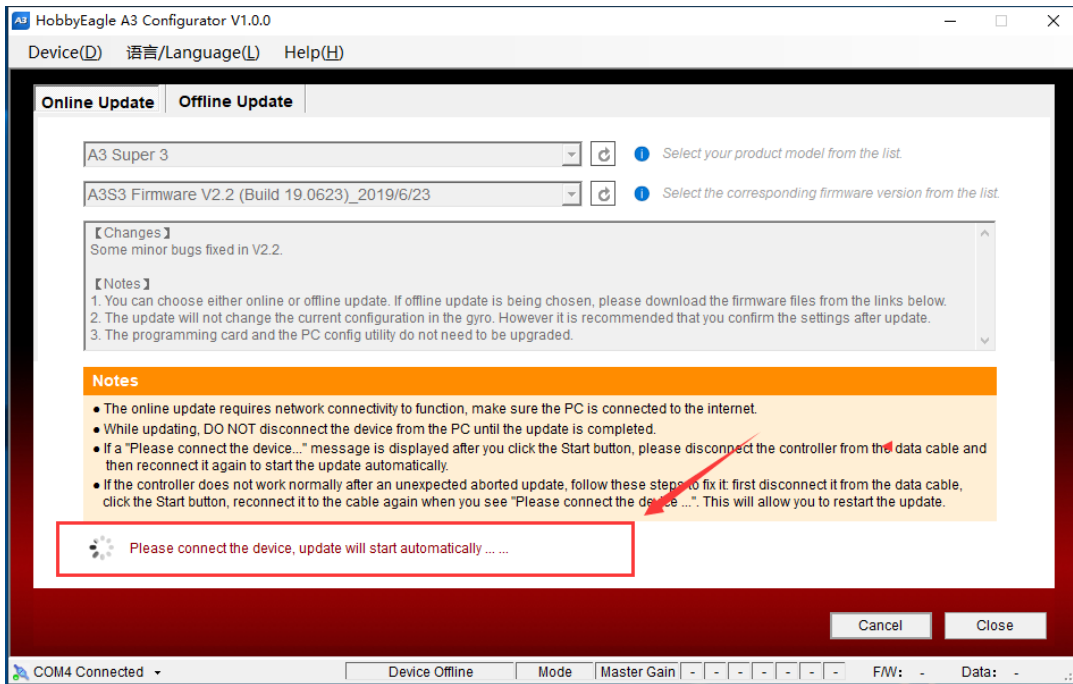
Click the *Start* button.



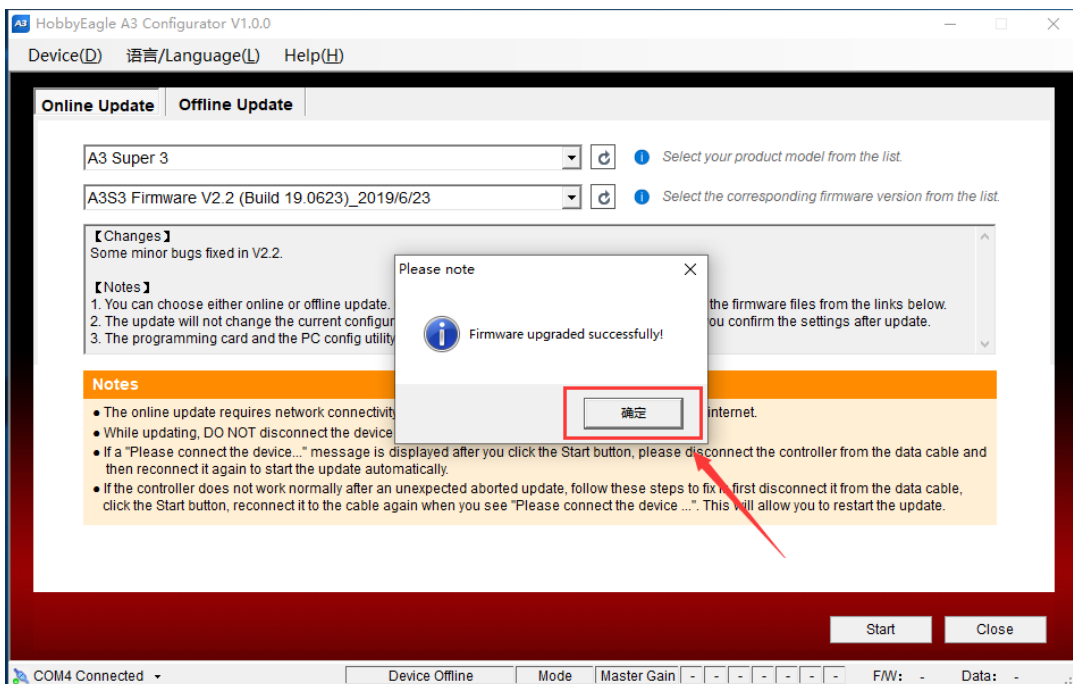
If the gyro has been already connected to the cable and powered on. The update will start automatically.



If you are updating a program card, when you are prompted to connect the device, plug the cable to the data port of the program card, the update will start immediately.

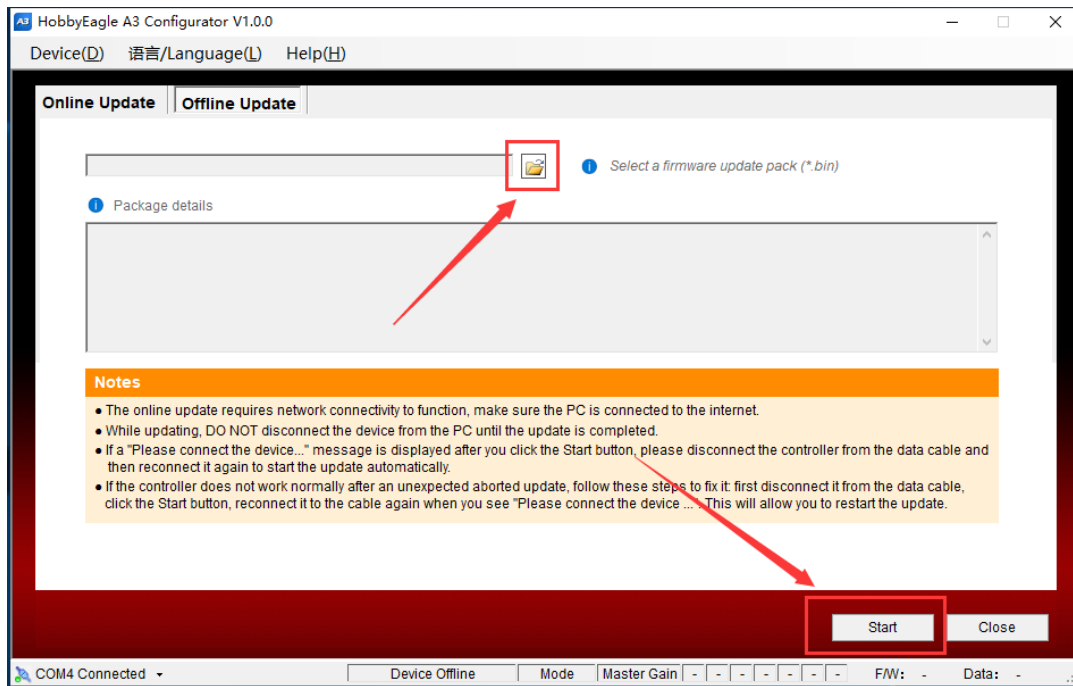


Wait for the update to complete, DO NOT disconnect the gyro or program card from the PC while updating. Click *OK* when update is complete.



Offline Update

In the *Offline Update* tab, choose a local firmware file on the PC, then click *Start* button to start update. The following steps are the same as online update.



Troubleshooting

If the unit does not work normally after an unexpected aborted update, follow these steps to fix it:

1. First disconnect it from the data cable.
2. Click the *Start* button again.
3. Reconnect it to the cable again when you are prompted to connect the device.
This will allow you to restart the update.